

Ishtar-TB3000



Access Control
System



Drop-arm



Bi-directional



Mechanical
Unlocking



The newly designed Ishtar-TB3000 bridge tripod turnstile features a traffic indicator for seamless access control. This innovative product is perfect for high-traffic areas.

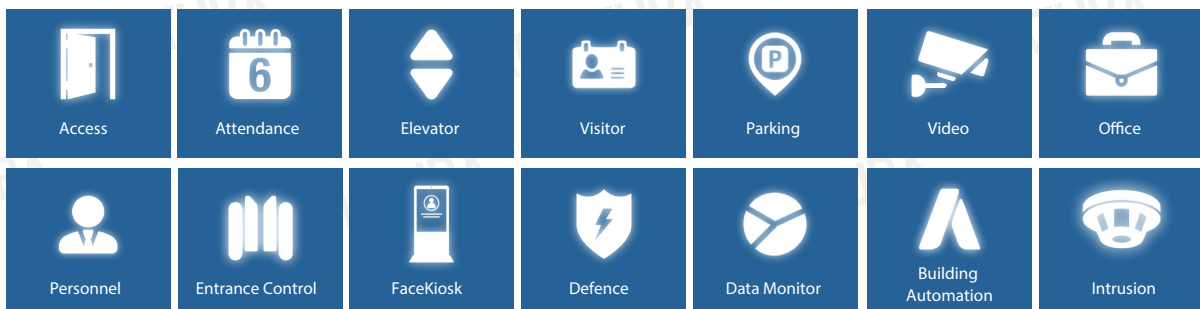
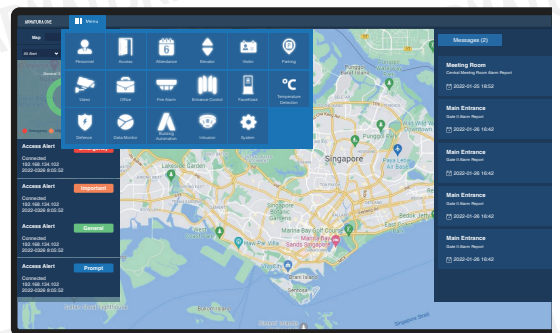
Ishtar-TB3000 offers a drop-arm design, allowing for efficient bi-directional movement. With mechanical unlocking capabilities, this turnstile ensures secure entry for all users and elevate the access control system.

Standard Application

Armatura One Security Platform

Web-Based Versatile Security Platform

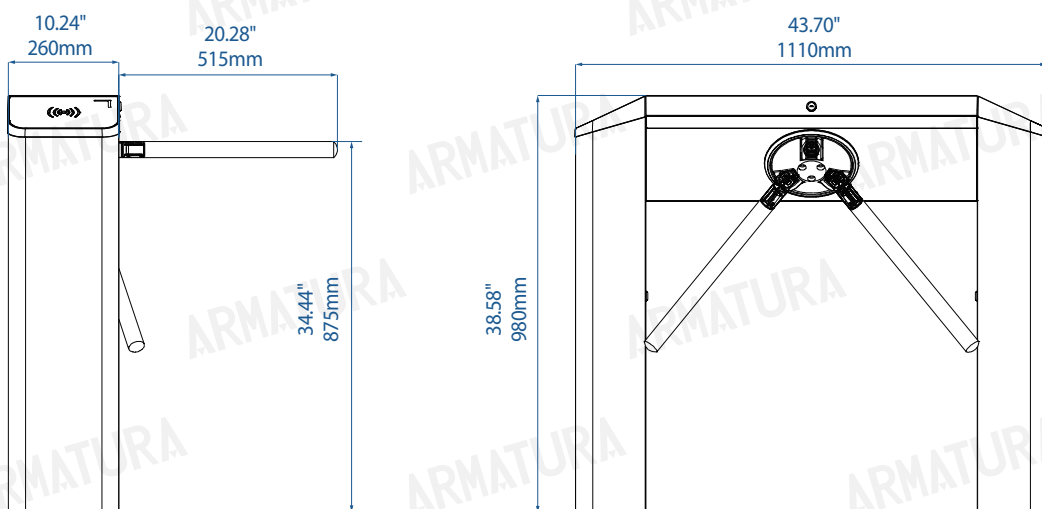
Armatura One is the ultimate “All-in-One” web-based security platform developed by Armatura. It contains multiple integrated modules: Personnel, Access Control, Time & Attendance, Elevator, Visitor, Parking Management, Video Management System, Office, Entrance Control, FaceKiosk, Defence, Data Monitor, Building Automation and Intrusion.



Features

- SUS304 stainless steel housing and bridge appearance
- Bi-directional tripod turnstile with drop arm function
- More cost-effective prices
- Low power consumption
- Wide range of accessories
- Easy and simple installation process

Dimension



Specifications

Power Requirements

AC110V / 220V, 50 / 60Hz

Operating Humidity

20% to 80% RH (non-condensing)

Lane Width

19.69"
500mm

Dimension with Packing

14.17" W x 47.64" L x 42.52" H
(360 x 1210 x 1080mm)

LED Indicator

Support

Barrier Material

SUS304 Stainless Steel

Security Level

Medium

Power Consumption

Running: 40W
Standby: 10W

Operating Environment

Outdoor

Footprint

10.24" W x 43.70" L
260 x 1110mm

Net Weight

66.14lb
30kg

Cabinet Material

SUS304 Stainless Steel

Barrier Movement

Rotation

Mean Cycles Between Failure (MCBF)

2 million

Operating Temperature

-4°F to 158°F
-20°C to 70°C

Speed of Throughput

Maximum 25 / minute

Dimension

30.31" W x 43.70" L x 38.58" H
(770 x 1110 x 980mm)

Weight with Packing

77.16lb
35kg

Lid Material

PC Plastics + SUS304 Stainless Steel

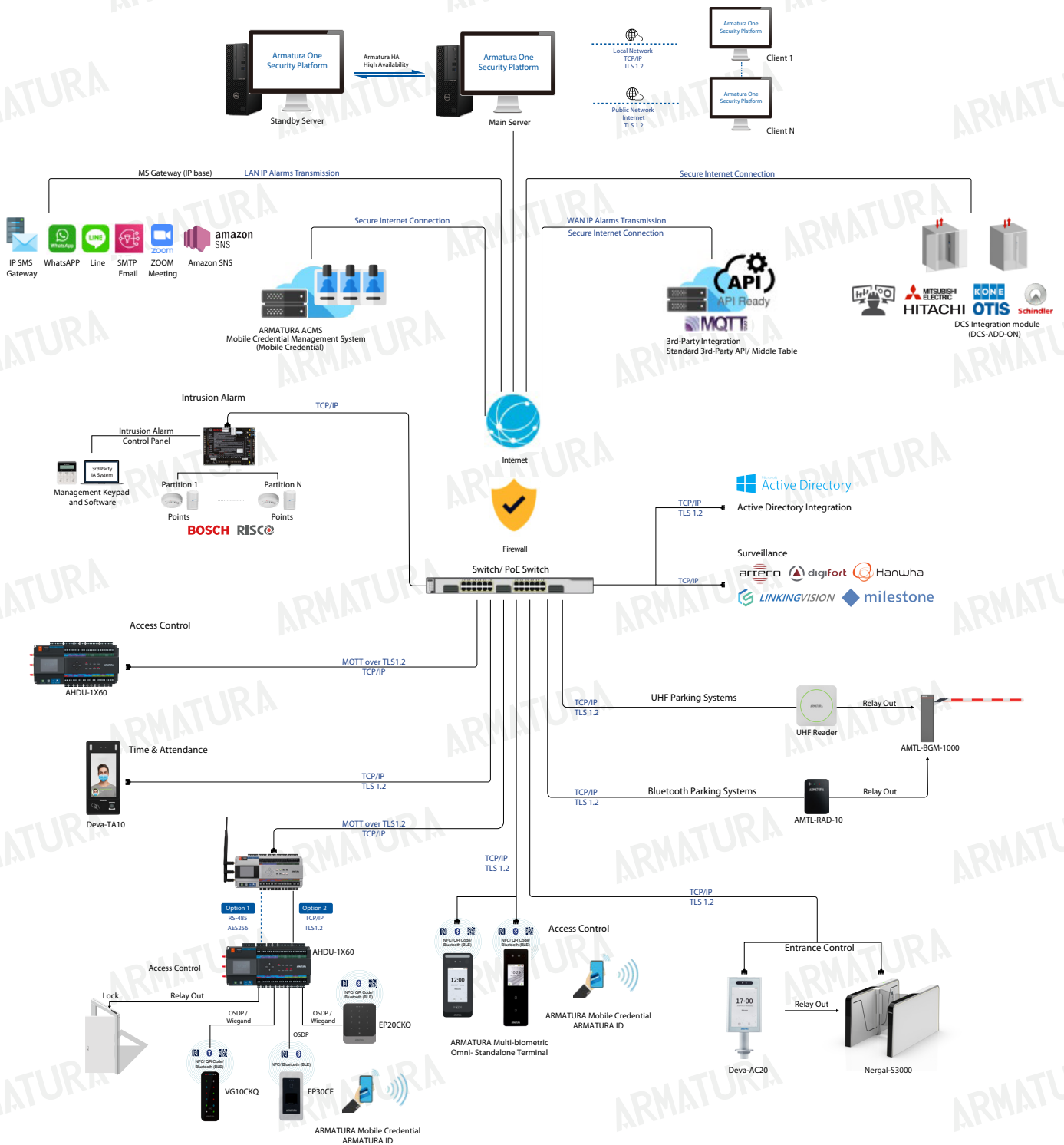
Emergency Mode

Support

Options/Accessories

Counter, SUS316 Cabinet and Lid,
Remote Control

Configuration





Address: 190 Bluegrass Valley Parkway Alpharetta, GA 30005

Phone: +1-650-4556863

Email: sales@armatura.us

Website: www.armatura.us

Copyright © 2023 Armatura LLC @ ARMATURA, the ARMATURA logo, are trademarks of Armatura